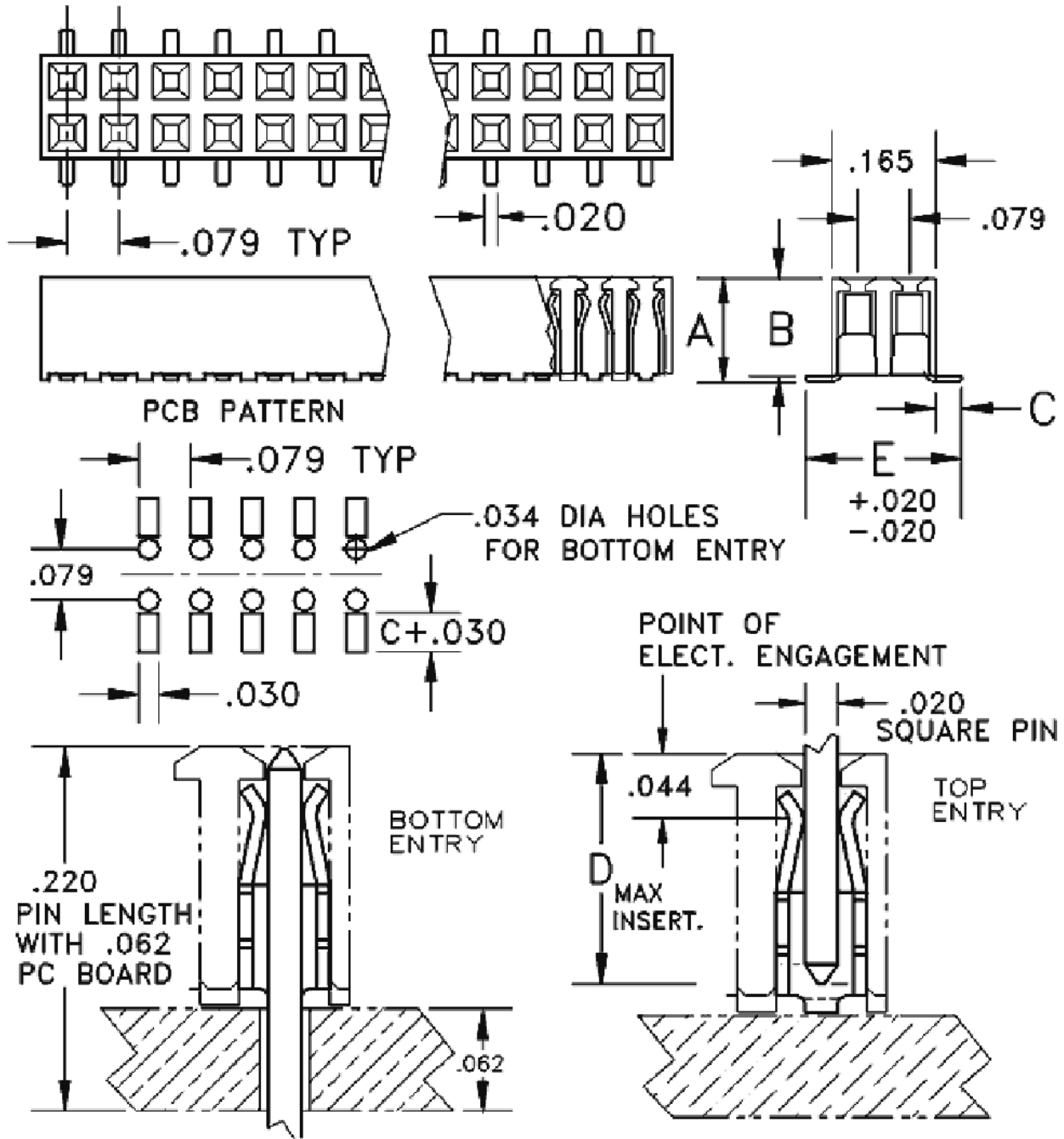


2mm	Socket	Double Row - Top or Bottom Entry	Straight	Surface Mount
-----	--------	----------------------------------	----------	---------------

2mm Center - Bottom Entry - Double Row Straight SMD Socket



Base Part Number	A		B		C		D		E		Plating Options	Number of Postions
	mm	Inch	mm	Inch	mm	Inch	mm	Inch	mm	Inch		
1352	4.11	0.162	3.99	0.157	1.02	0.040	3.43	0.135	6.22	0.245	G2LF : TLF	4-100
1353	4.11	0.162	3.99	0.157	2.54	0.100	3.43	0.135	9.27	0.365	G2LF : TLF	4-100

Technical Notes	
Contact Material:	Contact: Stamped, Phosphor Bronze
Insulation Material:	Glass Filled Nylon 46 - UL 94V-0 rated - Black (std)
Heat Deflection:	260°C @ 264 PSI per ASTM D648
Insulation Resistance:	5000 MegOhm @ 500VDC
Current Rating:	1 amps continuous @ 100 VDC/contact
Max Processing Temp:	250°C for 60 seconds
Insertion Force:	142 grams(5.0oz)(typ initial w/ .020”sq pin)
Extraction Force:	80 grams(2.8oz)(typ initial w/ .020”sq pin)
Plastic:	High Temperature Plastic
<p><i>INTERCONNECT SYSTEMS INC.</i> 741 Flynn Road, Camarillo, Ca 93012 · (805) 482-2870 · fax (805) 482-8470 · e-mail:info@isipkg.com</p>	