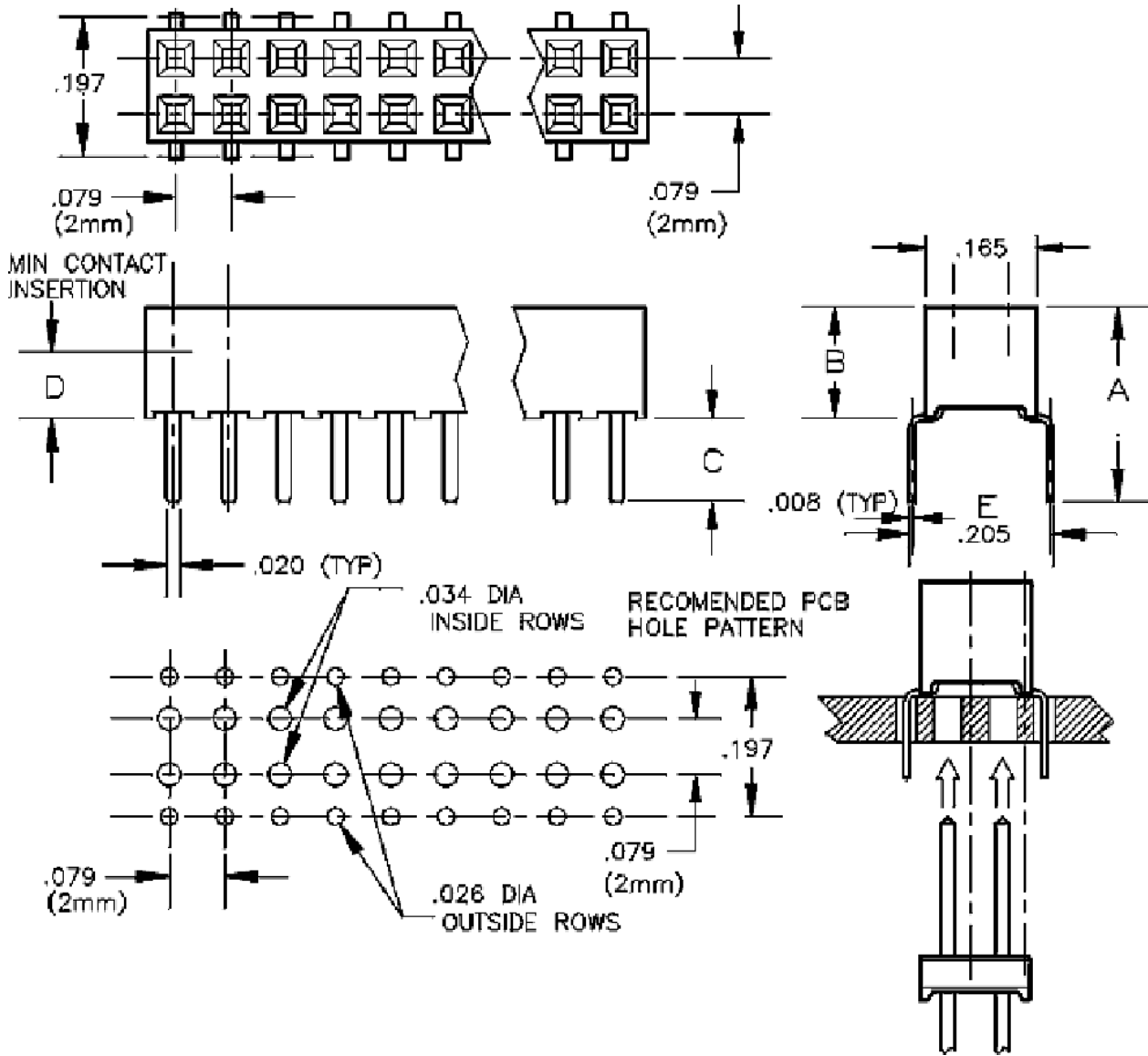


2mm	Socket	Double Row - Top or Bottom Entry	Straight	Thru Hole
-----	--------	----------------------------------	----------	-----------

2mm Center - Bottom Entry - Double Row Straight Socket



Base Part Number	A		B		C		D		E		Plating Options	Number of Postions
	mm	Inch	mm	Inch	mm	Inch	mm	Inch	mm	Inch		
<b>1356</b>	6.53	0.257	3.99	0.157	2.54	0.100	2.87	0.113	5.00	0.197	G2LF : TLF	4-100

<b>Technical Notes</b>	
<b>Contact Material:</b>	Contact: Stamped, Phosphor Bronze
<b>Insulation Material:</b>	Glass Filled Nylon 46 - UL 94V-0 rated - Black (std)
<b>Heat Deflection:</b>	260°C @ 264 PSI per ASTM D648
<b>Insulation Resistance:</b>	5000 MegOhm @ 500VDC
<b>Current Rating:</b>	1 amps continuous @ 100 VDC/contact
<b>Max Processing Temp:</b>	250°C for 60 seconds
<b>Insertion Force:</b>	142 grams (5.0oz) (typ initial w/ .020" sq pin)
<b>Extraction Force:</b>	80 grams (2.8oz) (typ initial w/ .020" sq pin)
<b>Plastic:</b>	High Temperature Plastic
<p><b><i>INTERCONNECT SYSTEMS INC.</i></b>            741 Flynn Road, Camarillo, Ca 93012 · (805) 482-2870 · fax (805) 482-8470 · e-mail: <a href="mailto:info@isipkg.com">info@isipkg.com</a></p>	