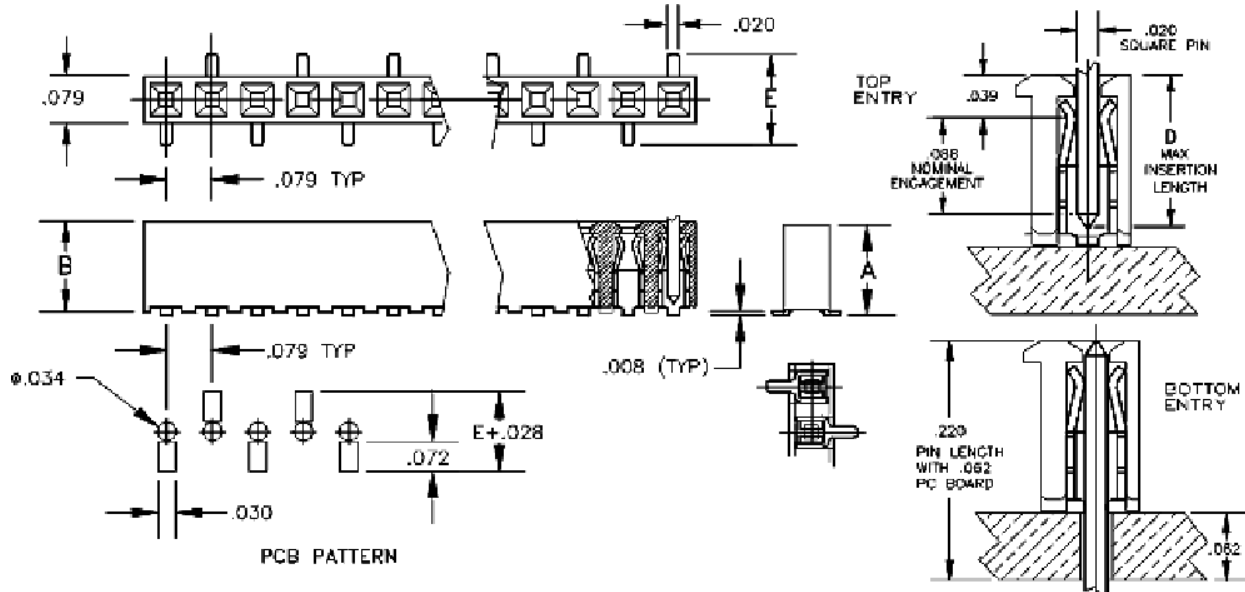


2mm	Socket	Single Row Top & Bottom Entry	Straight	Surface Mount
-----	--------	-------------------------------	----------	---------------

2mm Center - Single Row Straight - Top or Bottom Entry - Surface Mount Socket



Base Part Number	A		B		C		D		E		Plating Options	Number of Postions
	mm	Inch	mm	Inch	mm	Inch	mm	Inch	mm	Inch		
1309 1309R	4.11	0.162	3.99	0.157			3.99	0.157	4.06	0.160	G2LF: TLF	2-50
R=reversed PCB												

Technical Notes	
Contact Material:	Contact: Stamped - Phosphor Bronze
Insulation Material:	Glass Filled Nylon 46 - UL 94V-0 rated - Black (std)
Heat Deflection:	260°C @ 264 PSI per ASTM D648
Insulation Resistance:	5000 MegOhm @ 500VDC
Current Rating:	1 amps continuous @ 100 VDC/contact
Max Processing Temp:	250°C for 60 seconds
Insertion Force:	142 grams (5.0oz) (typ initial w/ .020 inch sq pin)
Extraction Force:	80 grams (2.8oz) (typ initial w/ .020 inch sq pin)
Plastic:	High Temperature Plastic
INTERCONNECT SYSTEMS INC.	
741 Flynn Road, Camarillo, Ca 93012 · (805) 482-2870 · fax (805) 482-8470 · e-mail: info@isipkg.com	