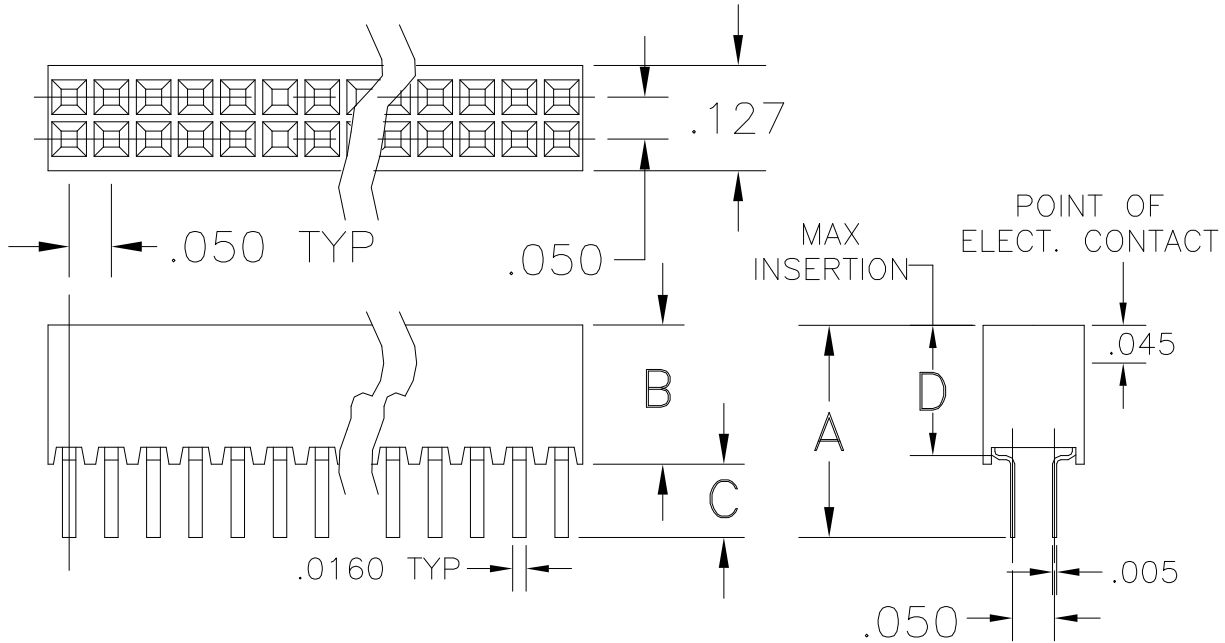


.050	Socket	Double Row	Straight	Thru Hole
------	--------	------------	----------	-----------

.050 inch Center - Double Row Straight Socket



Base Part Number	A		B		C		D		E		Plating Options	Number of Postions
	mm	Inch	mm	Inch	mm	Inch	mm	Inch	mm	Inch		
1477	6.40	0.252	4.19	0.165	2.21	0.087	3.68	0.145			G2LF	2-120

Technical Notes	
Contact Material:	Contact: Stamped - BeCu
Insulation Material:	Glass Filled Nylon 46 - UL 94V-0 rated - Black (std)
Heat Deflection:	260°C @ 264 PSI per ASTM D648
Insulation Resistance:	5000 MegOhm @ 500VDC
Current Rating:	1 amps continuous @ 100 VDC/contact
Max Processing Temp:	250°C for 60 seconds
Insertion Force:	36 grams(1.3oz) w/.016" sq pin 65 grams(2.3oz) w/ .018" rd pin (typ initial/contact)
Extraction Force:	29 grams(1.0oz) w/.016" sq pin 57 grams(2.0oz) w/ .018" rd pin (typ initial/contact)
Plastic:	High Temperature Plastic
INTERCONNECT SYSTEMS INC.	
741 Flynn Road, Camarillo, Ca 93012 · (805) 482-2870 · fax (805) 482-8470 · e-mail: info@isipkg.com	