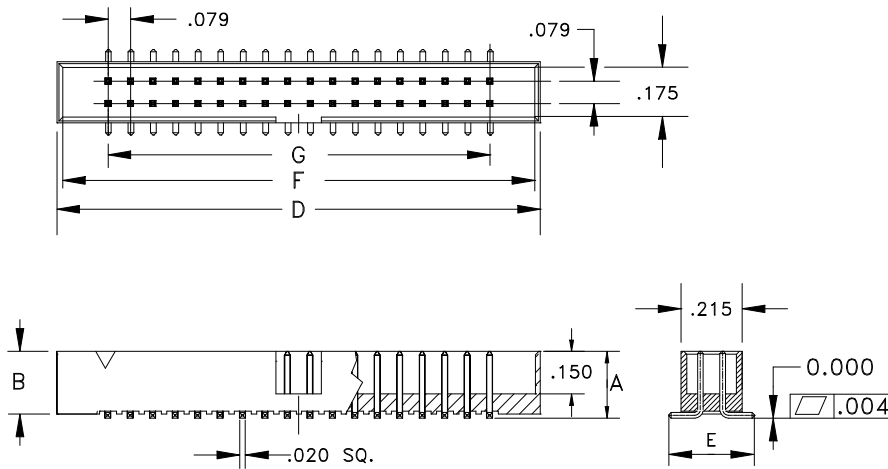


2mm	Header	Double Row - Box	Straight	Surface Mount
-----	--------	------------------	----------	---------------

2mm Center - .020" Square Pin, Box, Double Row Surface Mount Header



NUMBER OF CONTACTS	D	F	G
10	.673	.634	.315
12	.752	.713	.394
14	.831	.791	.472
16	.909	.870	.551
20	1.067	1.028	.709
24	1.224	1.185	.866
26	1.303	1.264	.945
30	1.461	1.421	1.102
34	1.618	1.579	1.260
36	1.697	1.657	1.339
44	2.012	1.972	1.654
50	2.248	2.209	1.890
60	2.642	2.602	2.283
68	2.957	2.917	2.598

Base Part Number	A		B		C		D		E		Plating Options	Number of Positions
	mm	Inch	mm	Inch	mm	Inch	mm	Inch	mm	Inch		
2475	5.97	0.235	5.59	0.220					7.52	0.296	G2LF : TLF	See dwg

Technical Notes	
Contact Material:	Pin: Phosphor Bronze - .020"sq pin, burr free both ends
Insulation Material:	Glass Filled Nylon 46 - UL 94V-0 rated - Black (std)
Heat Deflection:	260°C @ 264 PSI per ASTM D648
Insulation Resistance:	5000 MegOhm @ 500VDC
Current Rating:	2 amps continuous @ 100 VDC/contact
Max Processing Temp:	250°C for 60 seconds
Plastic:	High Temperature Plastic
INTERCONNECT SYSTEMS INC.	
741 Flynn Road, Camarillo, Ca 93012 · (805) 482-2870 · fax (805) 482-8470 · e-mail: info@isipkg.com	