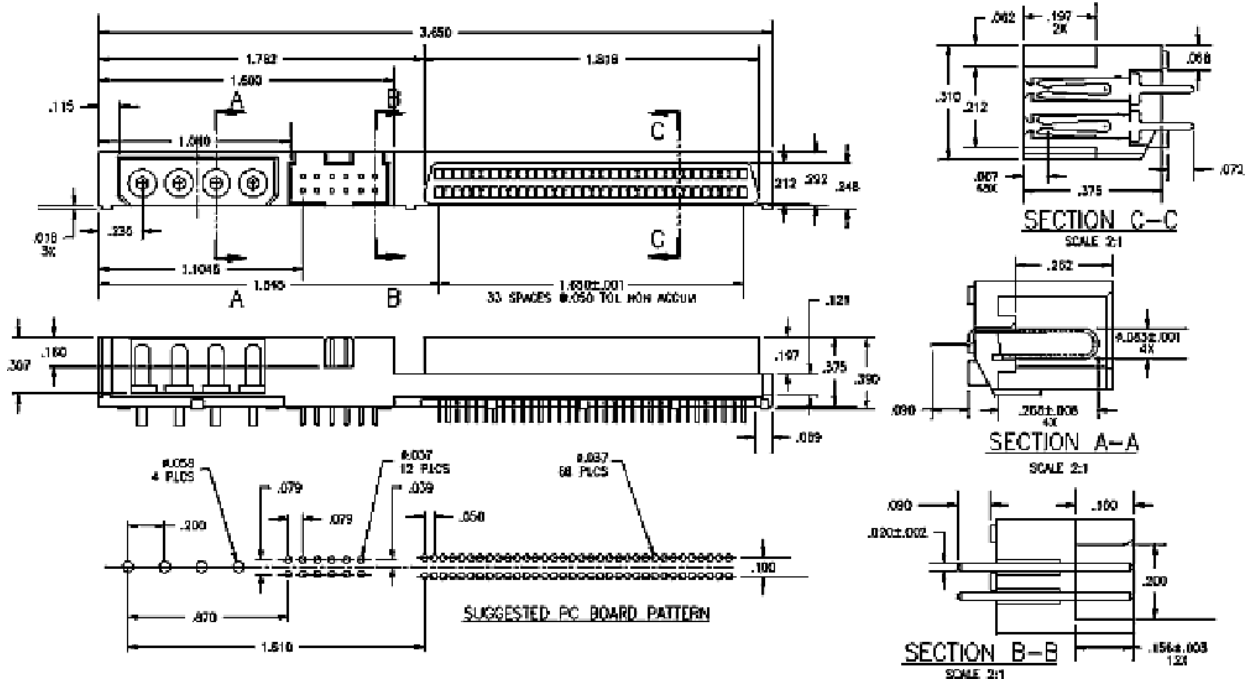


.100	HDD	68 Female + 12 Male + 4 Male Power	Straight	
------	-----	------------------------------------	----------	--

Disk Drive Wide SCSI Combo: 68 Female + 12 Male + 4 Male Power - Straight



Base Part Number	A		B		C		D		E		Plating Options	Number of Positions
	mm	Inch	mm	Inch	mm	Inch	mm	Inch	mm	Inch		
7532											X	One Per

Technical Notes	
Insulation Material:	Glass Filled Nylon 46 - UL 94V-0 rated - Black (std)
Insulation Resistance:	5000 MegOhm @ 500VDC
Plating:	Power = tin : Signal = G2LF (gold/ tin)
Max Processing Temp:	250°C for 60 seconds
Plastic:	High Temperature Plastic
INTERCONNECT SYSTEMS INC.	
741 Flynn Road, Camarillo, Ca 93012 · (805) 482-2870 · fax (805) 482-8470 · e-mail: info@isipkg.com	