

THIS DOCUMENT CONTAINS PROPRIETARY INFORMATION AND IS THE PROPERTY OF INTERCONNECT SYSTEMS INTERNATIONAL, LLC (ISI). IT SHALL NOT BE REPRODUCED, COPIED, OR DISCLOSED TO THIRD PARTIES WITHOUT THE PRIOR WRITTEN CONSENT OF ISI.

DWG NO. 1 2220000152

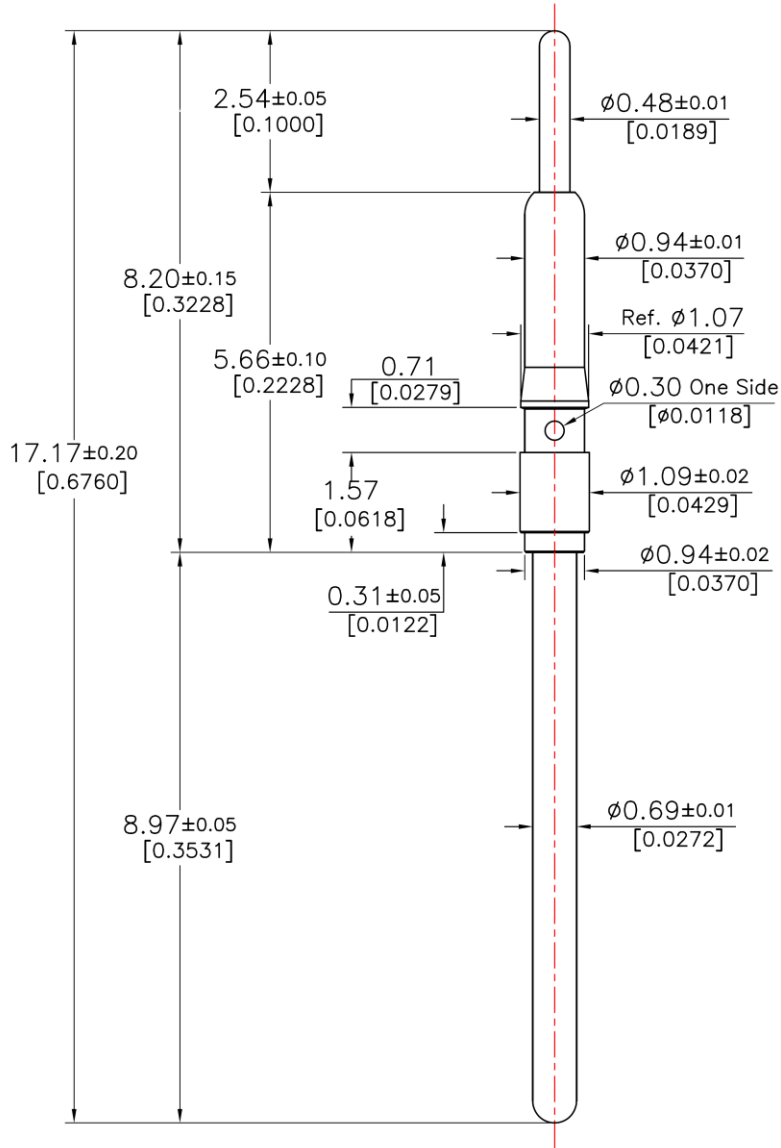
REVISION HISTORY

REV	DESCRIPTION	ECN	DATE	APRV'D
2	INITIAL RELEASE	--	04/16/18	RF

D
C
B
A

D
C
B
A

TOP SIDE



BOTTOM SIDE

Pointing Accuracy: ± 0.10 mm

Spring Force: ± 20%

STATE	TRAVEL	SPRING FORCE
Initial Travel	--	7.4g (0.260oz)
Recommended Travel	1.78mm (0.0701")	62.0g (2.188oz)
Full Travel	2.54mm (0.1000")	85.3g (3.008oz)

PART	MATERIAL	FINISH
Spring	Music Wire	10μ Au over Ni
Barrel	Brass	30μ Au over Ni
Top Plunger	Hardened Beryllium Copper	30μ Au over Ni

Operating Temperature
-55 ~ + 120°

***NOTE:** For fear of having a shorting issue or abnormal mechanical operation, the pointing accuracy needs to be considered in housing design.

DIMENSIONS ARE IN MM

CONTRACT NO. SO28288				INTERCONNECT SYSTEMS INTL, LLC a mollex company	
DRAWN BY Marco Nunes		DATE 4/16/2018		741 FLYNN ROAD, CAMARILLO, CALIFORNIA 93012	
DESIGNER ET		DATE 4/16/2018		TITLE POGO PIN 1.27mm Pitch, D, 62.0g SF, Au Plate Finish	
CHECKER Robert Flores		DATE 4/16/2018			
QA --	DATE --	SIZE A	RoHS X/X	SCALE N/A	DRAWING NO. 2220000152
PROCESS ENG. --	DATE --	SAVED AS: 2220000152.PDF	FINISHED ASSY: --	REV 2	SHEET 1 OF 1

4 3 2 1