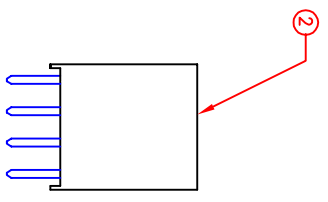
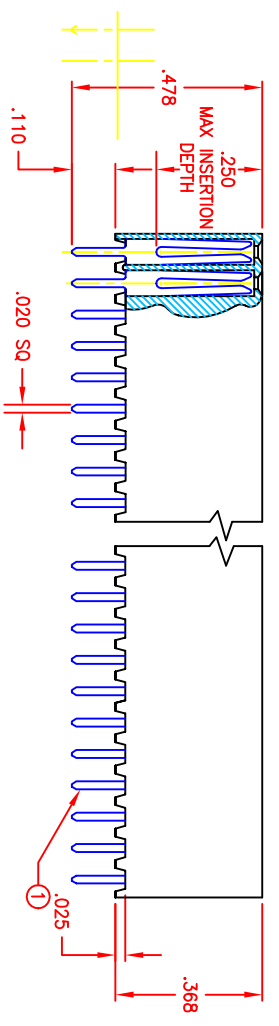
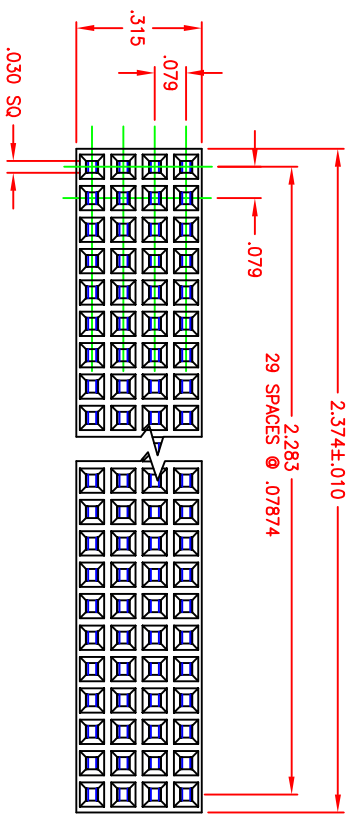


THIS DRAWING CONTAINS PROPRIETARY INFORMATION EXCLUSIVE TO CDW. CDW CONNECTORS AND SOCKETS ARE USED IN PART FOR THE MANUFACTURE, PRODUCTION AND DISTRIBUTION OF PRODUCTS AS SHOWN IN THIS DRAWING. THE USE OF CDW CDW CONNECTORS IN ANY OTHER



REVOLUTIONS		DESCRIPTION	DATE	APPROVED
ECO NO.:	REV:			
91XXX	C	ADDED	07.11.06	

FIND QTY	PART NO.	DESCRIPTION
2	40343	INSULATOR, 2MM P, 4 ROW STAMPED SKT,
1	A/R P40287-01	2MM TUNING FORK SOCKET

UNLESS OTHERWISE SPECIFIED: DIMENSIONS ARE IN INCHES AND TOLERANCES ARE: FRACTIONS DECIMALS ANGLES ±1/64 .XX ± .02 ±1°
 DRAWN BY: AM DATE: 5.07.01
 APPROVED: DATE: 5.07.01

TITLE: LIST OF MATERIALS
 COMM CON WORLDWIDE, INC. a subsidiary of INTERCONNECT SYSTEMS INC. **ISI**
 2MM P, 4 ROW STAMPED SOCKET
 NON-STACKTHRU, PC/104-PLUS

CAT. NO.: 1241-XXXX
 SCALE: 2:1
 SIZE: A
 DWG NO.: 30272
 SHEET 1 OF 1

- MAX NUMBER OF CONTACTS: 120
- PLATING: G2LF 10 MICRO INCHES OF GOLD MIN PER MIL-G-45204 TYPE II (ENGAGEMENT END)
 150 MICROINCHES OF PURE BRIGHT TIN PER MIL-T-10727 (SOLDER TAIL END) OVER 50 MICRO INCHES OF NICKEL PER QQ-N-290
- MATERIALS: INSULATORS - BLACK, 30% GLASS FILLED THERMOPLASTIC, 94V-0, RATED -65°C TO 250 °C RoHS COMPLIANT
 XYDAR LCP RESIN: G-930
 CONTACT - PHOSPHOR BRONZE, ALLOY 51000

NOTES: UNLESS OTHERWISE SPECIFIED