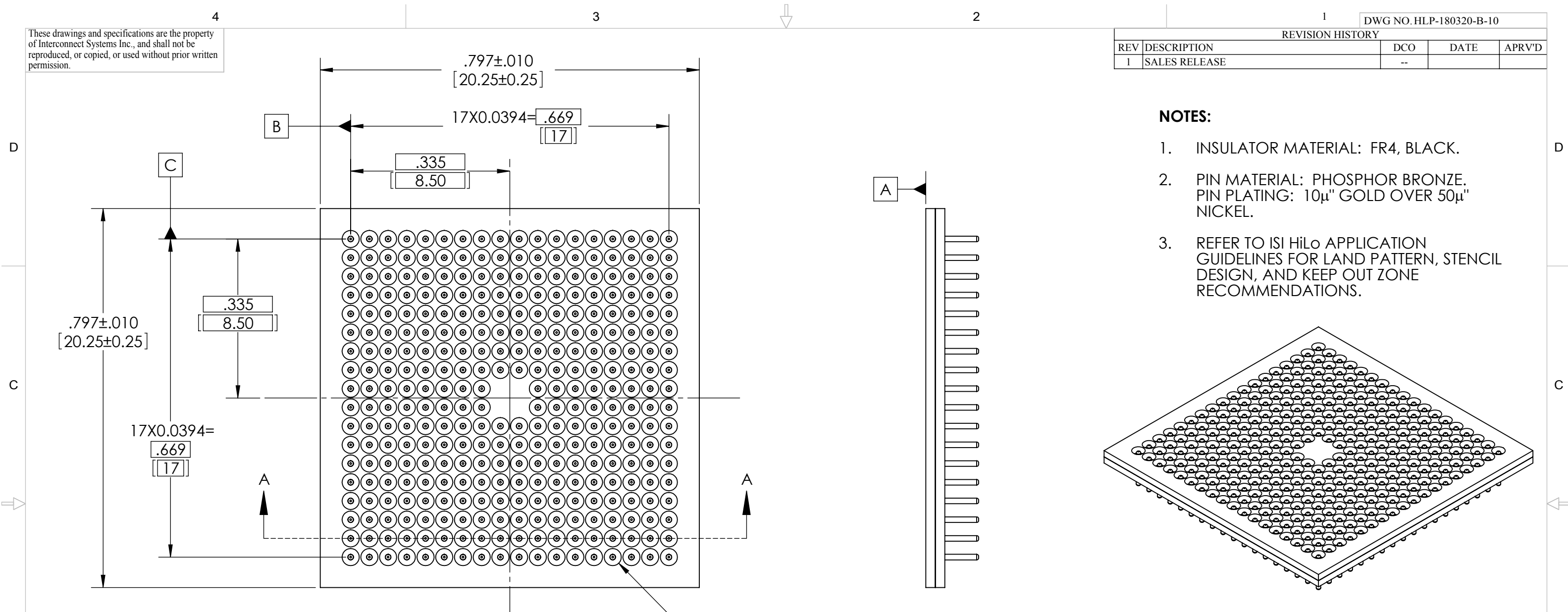


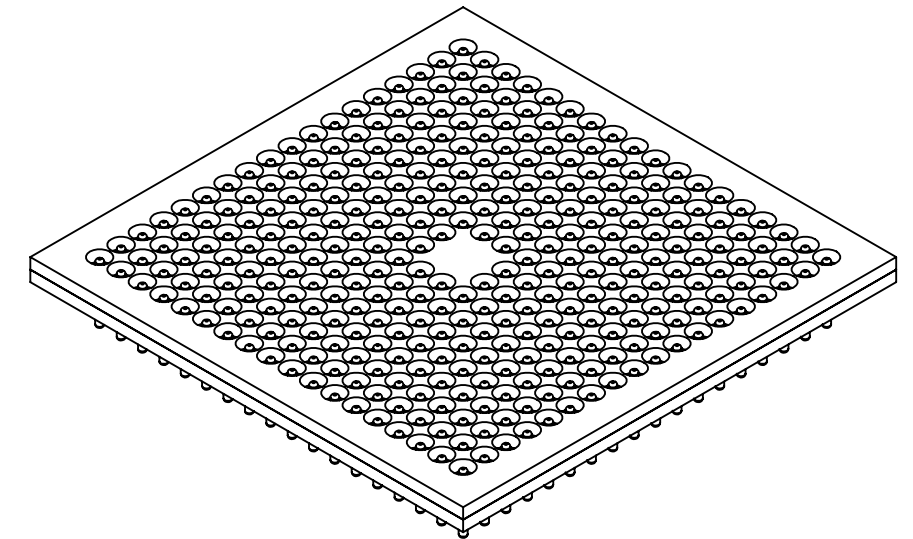
These drawings and specifications are the property of Interconnect Systems Inc., and shall not be reproduced, or copied, or used without prior written permission.

REVISION HISTORY				
REV	DESCRIPTION	DCO	DATE	APRV'D
1	SALES RELEASE	--		



NOTES:

- INSULATOR MATERIAL: FR4, BLACK.
- PIN MATERIAL: PHOSPHOR BRONZE. PIN PLATING: 10μ" GOLD OVER 50μ" NICKEL.
- REFER TO ISI HiLo APPLICATION GUIDELINES FOR LAND PATTERN, STENCIL DESIGN, AND KEEP OUT ZONE RECOMMENDATIONS.

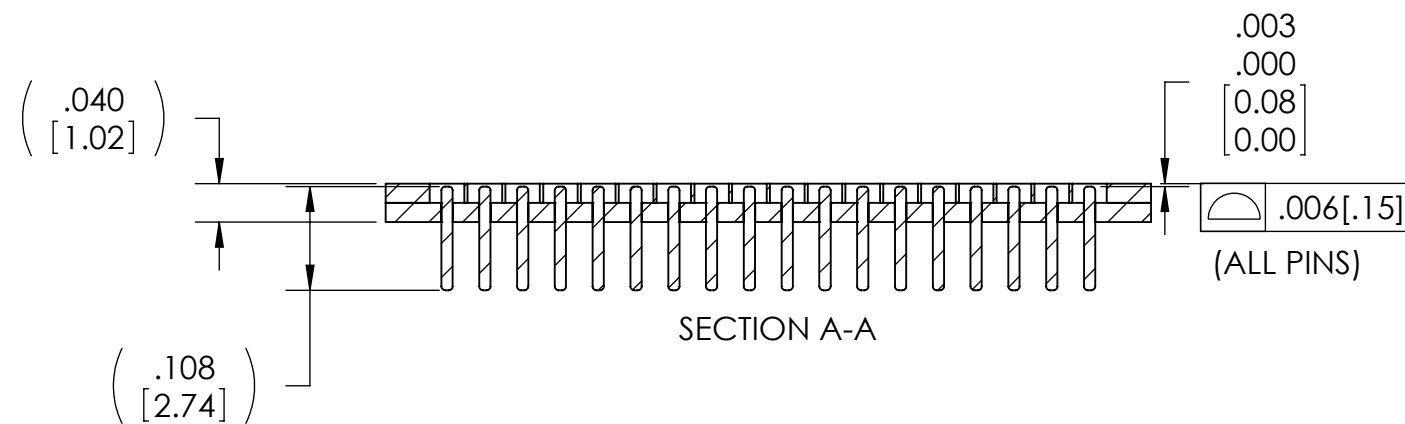


APPROVAL OF THIS DRAWING AUTHORIZES INTERCONNECT SYSTEMS INC. TO PRODUCE PARTS AS OUTLINED HEREIN.

PRINTED NAME: _____

APPROVAL: _____

DATE: _____



THIRD ANGLE PROJECTION	CONTRACT NO.
UNLESS OTHERWISE SPECIFIED: DIMENSIONS ARE: IN INCHES [MILLIMETERS]	DRAWN BY P.GUNDALA DATE 06/26/09
TOLERANCES ARE: DECIMALS: ANGLES: .XX ± .010 ± 10° .XXX ± .005 .XXXX ± .0005 FRACTIONS: [.X] ± 0.25 ± 1/64 [.XX] ± 0.13 [.XXX] ± 0.013	DESIGNER P.GUNDALA DATE 06/26/09
	CHECKER DATE
	QA DATE
	PROCESS ENG. DATE

INTERCONNECT SYSTEMS INC.
759 FLYNN ROAD, CAMARILLO, CA 93012

TITLE **HiLo PIN FIELD ASSEMBLY, FR4**
18X18 ARRAY, 320 PINS
.0394" [1 MM] PITCH

SIZE B	SCALE 5:1	DRAWING NO. HLP-180320-B-10	REV -+
SAVED AS: HLP-180320-B-10-SALES.SLDDRW		FINISHED ASSY:	Sheet 1 OF 1